

# Supervised Gate Edge Monitoring System

## Gate Edge Radio



*Monitors the presence  
and function of  
10k sensing edges*



- Works with all 10K monitored gate operators
- Uses 10K terminated edges
- 2 channels for up to 2 edges and transmitters per receiver
- Low Battery alert before failure
- Receiver powered by 12-30 VDC
- 2 output relays. 10K during normal conditions, shorted during sense or power fail
- Simple setup and programming
- Audio and LED feedback for installation and troubleshooting
- UL325 listed device
- Hard wired motor sensing for 12-24 volt DC motors; non-contact ACSSENS module for high voltage AC motors (115-460VAC)

All Models Listed  
UL 325 Compliant



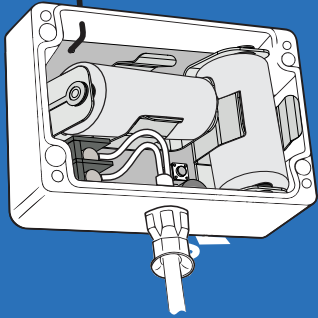
Supporters and Proud Members of



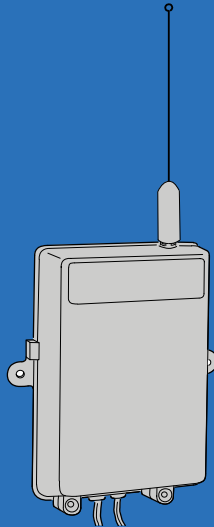
# Linear

PRO ACCESS™

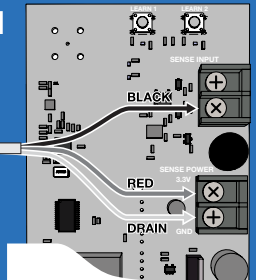
SGET Edge Transmitter



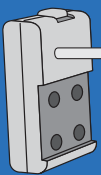
SGER Edge Receiver



SGER board



ACSENS Module



The **SGER** monitors for motor running condition, monitoring the edges at all times.

Upon the motor stopping, the **SGER** sends an individual query to each transmitter for a status check. This monitoring occurs after each run, two times per cycle.

**SGEK-AC:**

- SGER Receiver
- SGET Edge Transmitter
- ACSENS module

**SGEK-DC:**

- SGER Receiver
- SGET Edge Transmitter

**SGET** also sold individually for expansion to two edges

**ACSENS** module sold separately to convert SGEK-DC to SGEK-AC

**CAUTIONS**



- Automatic gates are not for pedestrians
- Automatic gate operators are designed for vehicular traffic only; operators are powerful and can cause serious injury or death; DIRECT ALL PEDESTRIAN TRAFFIC TO SEPARATE PEDESTRIAN GATE

