

★ TROUBLESHOOTING NOTES

If you experience problems with the MVP-DO Receiver, try some of the suggestions listed below before calling the Factory Technicians.

RECEIVER APPEARS DEAD; THERE IS NO RESPONSE WHEN TRANSMITTER BUTTONS ARE PUSHED.

- Check the power connections to the receiver.
- There must be at least 20 VAC at the receiver power connections. (If a 24V system).
- Review the code switch and the selector switch settings then reprogram the receiver..
- Try a different code switch setting.
- Check the antenna installation.
- Wait one minute for the receiver to “warm-up”.
- Check battery in transmitter.

RECEIVER “CLICKS” WHEN ANY TRANSMITTER BUTTON IS PUSHED, BUT NOTHING ELSE HAPPENS.

- Check the wire & connections in the STOP circuit. Refer to Figure 3.
- Check the OPEN & CLOSE connections.
- The wire gage may be too small for the number of wall stations used.
- Check the power to the door operator.
- Check the door operator’s control voltage.

SHORT DISTANCE OR INTERMITTENT OPERATION.

- Relocate the antenna with a coaxial cable.
- Metal objects too close to receiver, move to a better location.
- External interference (such as radio towers).

- Change to a different frequency.
- Stuck transmitter in building.
- Change code switches from factory settings.
- Check battery in transmitter.

ONE RECEIVER WORKS BUT THE OTHER IS DEAD.

- Relocate the antennas.
- Receivers too close together (cross-talking); move to different locations.
- Check code switch settings.

SOME THINGS TO REMEMBER:

- Range is dependent on the installation, type of building, type of door and the location of the transmitter. When these conditions change so will the distance.
- Any transmitter can interfere with operation. These include cell phones, cordless phones, wireless systems and CB and mobile transmitters. Other sources of interference include computer equipment, industrial equipment, electric motors, fluorescent lights, etc. The list is endless.
- Do not lengthen or shorten the receiver antenna. It is set to an optimal length based on the frequency of operation.
- If the antenna is blocked or shielded (such as a car traveling through a tunnel) the distance will decrease. Always change the Factory set codes.

LINEAR LIMITED WARRANTY

This Linear product is warranted against defects in material and workmanship for twelve (12) months. This warranty extends only to wholesale customers who buy direct from Linear or through Linear’s normal distribution channels. Linear does not warrant this product to consumers. Consumers should inquire from their selling dealer as to the nature of the dealer’s warranty, if any. There are no obligations or liabilities on the part of Linear LLC for consequential damages arising out of or in connection with use or performance of this product or other indirect damages with respect to loss of property, revenue, or profit, or cost of removal, installation, or reinstallation. All implied warranties, including implied warranties for merchantability and implied warranties for fitness, are valid only until the warranty expires. This Linear LLC Warranty is in lieu of all other warranties express or implied.

All products returned for warranty service require a Return Product Authorization Number (RPA#). Contact Linear Technical Services at 1-800-421-1587 for an RPA# and other important details.

Linear®

Building On Innovation.

USA & Canada
(800) 421-1587 & (800) 392-0123
(760) 438-7000
Toll Free FAX (800) 468-1340
www.linearcorp.com

 **READ THIS MANUAL CAREFULLY
BEFORE BEGINNING INSTALLATION** 

MVP-DO COMMERCIAL RECEIVER INSTRUCTIONS

INSTALLER: Leave this manual with your customer upon completion of the installation

★ PRODUCT FEATURES

MVP-DO Commercial Receivers are designed to work with most commercial door operators. Programming the receiver to accept the transmitter signal is a matter of pushing the “LEARN” button on the receiver body and activating the transmitter. The MVP-DO is connected to the commercial operator in the same manner as a 3-button station and provides open and close functionality via radio control to commercial door operators not wired with single button radio terminals. The receiver is powered from the operator’s 24 VAC transformer. The antenna is removable and may be relocated (using coaxial cable, not included) for better RF reception.

★ IMPORTANT INSTALLATION NOTES

 **WARNING** **TO REDUCE THE RISK OF SEVERE INJURY OR DEATH:
READ AND FOLLOW ALL INSTALLATION INSTRUCTIONS!**

- MVP-DO RECEIVERS ARE INTENDED FOR USE WITH COMMERCIAL DOOR OPERATORS ONLY. DO NOT USE FOR ANY OTHER PURPOSE. DO NOT MODIFY IN ANY MANNER.
- CHECK LOCAL BUILDING AND ELECTRICAL CODES FOR MANDATORY INSTALLATION AND WIRING REQUIREMENTS.
- CONNECT POWER CORDS ONLY TO A PROPERLY GROUNDED OUTLET. IF PERMANENT WIRING IS REQUIRED BY CODES, DISCONNECT POWER AT FUSE BOX OR CIRCUIT BREAKER BEFORE ATTEMPTING ANY WIRING CONNECTIONS.
- DO NOT WEAR RINGS, WATCHES OR LOOSE CLOTHING WHILE INSTALLING OR SERVICING GARAGE DOOR OPENERS. WEAR SAFETY GOGGLES OR OTHER PROTECTIVE EYEWEAR.
- AN UNBALANCED DOOR OR ONE THAT STICKS OR BINDS MAY CAUSE INJURY OR DEATH. ENSURE DOOR IS PROPERLY BALANCED AND ELIMINATE ANY STICKING OR BINDING.
- YOUR GARAGE DOOR IS A LARGE MOVING OBJECT. THE SPRINGS, PULLEYS, CABLES AND MOUNTING HARDWARE UTILIZED TO BALANCE ITS OPERATION ARE UNDER EXTREME TENSION AT ALL TIMES AND CAN CAUSE SERIOUS PERSONAL INJURY, EVEN DEATH, IF DISTURBED. ONLY A QUALIFIED SERVICE PERSON SHOULD MOVE, LOOSEN OR ADJUST DOOR SPRINGS OR HARDWARE.
- LOCATE CONTROL PUSHBUTTONS WITHIN SIGHT OF THE DOOR AND AWAY FROM THE MOVING PARTS OF THE DOOR. INSTALL ENTRAPMENT WARNING LABEL NEXT TO THE CONTROL PUSHBUTTON IN A PROMINENT LOCATION.
- REMOVE ALL ROPES AND REMOVE OR MAKE INOPERATIVE ALL LOCKS CONNECTED TO THE GARAGE DOOR.
- THE IMPORTANT SAFEGUARDS AND INSTRUCTIONS IN THIS MANUAL CANNOT COVER ALL POSSIBLE CONDITIONS AND SITUATIONS. IT MUST BE UNDERSTOOD THAT COMMON SENSE AND CAUTION MUST BE EXERCISED BY THE PERSON(S) INSTALLING, MAINTAINING AND OPERATING THIS EQUIPMENT.

 **WARNING** **DO NOT USE RADIO CONTROLS ON COMMERCIAL DOOR OPERATORS UNLESS PROPER ENTRAPMENT PROTECTION DEVICES ARE INSTALLED. CONSULT THE MANUFACTURER OF YOUR OPERATOR FOR MORE DETAILS.**

★ MVP-DO RECEIVER WIRING INSTRUCTIONS

WARNING IMPROPER WIRING COULD CAUSE ELECTROCUTION OR DAMAGE TO CIRCUITRY. FOLLOW LOCAL BUILDING AND ELECTRICAL CODES.

WARNING TO PREVENT ELECTROCUTION DISCONNECT POWER AT FUSE BOX AND DOOR OPENER BEFORE WIRING PERMANENTLY.

The MVP-DO receiver functions as a 1-button radio. Two sets of isolated contacts are provided; normally open contacts for the OPEN PUSHBUTTON (orange wires); normally open contacts for the CLOSE PUSHBUTTON (black wires). When the receiver is activated, the OPEN contacts are first activated and after a 1/4 second delay the CLOSE contacts are activated. This provides an open override of the close, and the door operator will only close from the full open position.

Typical 4-wire 3-button stations are wired as shown in Figure 2. Number 18 gauge wire or heavier must be used for wiring the control stations to the door operator. Smaller gauge wire may cause operational problems, especially when multiple 3-button stations are used. For typical installations the MVP-DO receiver is mounted near the door operator, away from any high voltage conduits or steel support beams. For wiring, follow the steps below and refer to Figure 3.

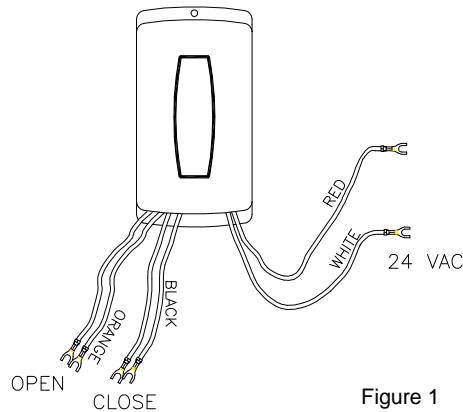


Figure 1

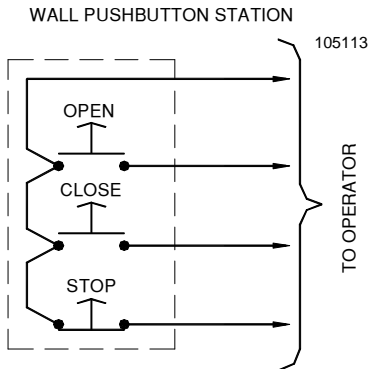


Figure 2

1. In the door operator control panel, locate the wire connecting the door operator to the 3-button station COMMON.
 2. Make sure the 3-button station is properly wired to the operator and functioning per the operator's installation instructions.
 3. Connect the following wires from the MVP-DO to the operator 3-button COMMON (as shown in Figure 3):
ONE ORANGE (OPEN)
ONE BLACK (CLOSE)
 4. Connect the remaining MVP-DO black wire to the CLOSE pushbutton terminal in the door operator control panel.
 5. Connect the remaining MVP-DO orange wire to the OPEN pushbutton terminal in the door operator control panel.
6. Finish the wiring by connecting 24 VAC to the red and white wires of the MVP-DO receiver.

BEFORE APPLYING POWER CHECK CONNECTIONS AND INSTALL THE ANTENNA

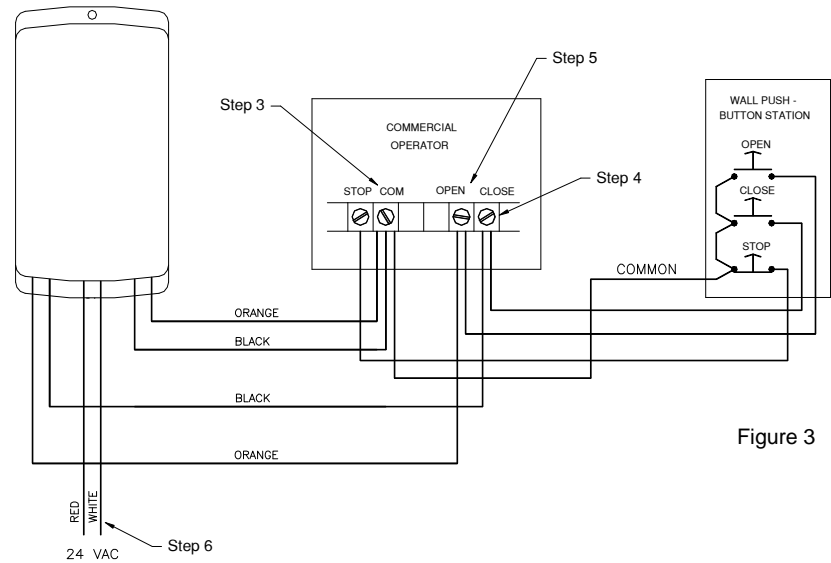


Figure 3

RECEIVER PROGRAMMING INSTRUCTIONS ★

Learning Transmitter Codes

The MVP-DO receiver is capable of learning the codes from up to 8 different Open/Close/Stop transmitters. The transmitters may be any combination of MVP, Classic or original dip-switch type Open/Close/Stop transmitters (Models 8833-O/C/S, 8833C-O/C/S, 831, 733, 639, and/or 53S).

Match the receiver operating frequency with the transmitter operating frequency. Pre-program the transmitter (or set the DIP switches) according to the instructions that accompanied the transmitter.

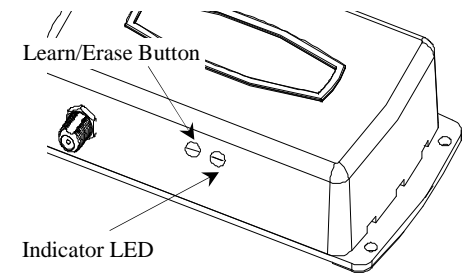
For transmitters that can operate multiple doors (Models 8833C-O/C/S, 733 639, and 53S), make sure the selector switch(es) is (are) positioned for the desired door you want to operate before starting the receiver programming steps below.

NOTE ONLY THE OPEN AND CLOSE BUTTON OF THE TRANSMITTER WILL OPERATE THE MVP-DO RECEIVER

Programming The Receiver

- Step 1:** Momentarily press and release the Learn button. The LED will turn on.
- Step 2:** Using a programmed transmitter, press any one of the transmitter buttons (OPEN, CLOSE, or STOP). When the receiver learns the transmitter code, the LED will turn off. The receiver has automatically learned the two remaining buttons.
- Step 3:** Repeat to add additional transmitters with different codes if desired.

IT IS ONLY NECESSARY TO LEARN ONE BUTTON OF A 3-BUTTON TRANSMITTER



Erasing the Receiver's Memory

- Step 1:** Press and HOLD the Learn button. The indicator LED will turn on.
- Step 2:** When the LED turns off (after approximately 5 seconds), release the Learn button.

Important
 Refer to individual manuals for transmitter installation, coding and user instructions.